

## Induction Motors

# 6 W

□ 60 mm

## Combination Type, Round Shaft Type



### Specifications - Continuous Rating



| Product Name<br>Upper Level: Combination Type<br>Lower Level: Round Shaft Type<br>Lead Wire Type | Output Power<br>W | Voltage<br>VAC   | Frequency<br>Hz | Current*<br>A | Starting Torque<br>mN-m | Rated Torque<br>mN-m | Rated Speed<br>r/min | Capacitor<br>μF | Overheat Protection Device |
|--|-------------------|------------------|-----------------|---------------|-------------------------|----------------------|----------------------|-----------------|----------------------------|
| <b>2IK6UA</b> -□<br><b>2IK6A-UA</b>  | 6                 | Single-Phase 110 | 60              | 0.185 (0.179) | 40                      | 41                   | 1450                 | 2.5             | ZP                         |
|  |                   | Single-Phase 115 |                 | 0.189 (0.184) |                         |                      |                      |                 |                            |
| <b>2IK6GC</b> -□<br><b>2IK6A-GC</b>  | 6                 | Single-Phase 220 | 50              | 0.088         | 32                      | 49                   | 1150                 | 0.6             |                            |
|  |                   | Single-Phase 230 |                 | 0.090         |                         |                      | 1200                 |                 |                            |
| <b>2IK6UC</b> -□<br><b>2IK6A-UC</b>  | 6                 | Single-Phase 220 | 60              | 0.093 (0.090) | 40                      | 41                   | 1450                 | 0.6             |                            |
|  |                   | Single-Phase 230 |                 | 0.096 (0.093) |                         |                      |                      |                 |                            |

\* ( ) indicates the value of the round shaft type.

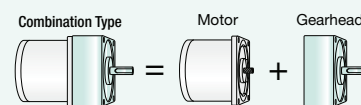
● The specifications apply to the motor only.

ZP: These products are impedance protected.

### Product Line

#### Combination Type

The combination type comes with a motor and a gearhead pre-assembled.  
The combination of the motor and the gearhead can be changed.  
They are also available separately.  
You can also remove the gearhead to change the installation position by 90°.



#### Combination Type

| Product Name     | Gear Ratio                                |
|------------------|---|
| <b>2IK6UA</b> -□ | <b>5, 6, 7.5, 9, 12.5, 15, 18</b>         |
|                  | <b>25, 30, 36</b>                         |
|                  | <b>50, 60, 75, 90, 100, 120, 150, 180</b> |
|                  | <b>250, 300, 360</b>                      |
| <b>2IK6GC</b> -□ | <b>5, 6, 7.5, 9, 12.5, 15, 18</b>         |
|                  | <b>25, 30, 36</b>                         |
|                  | <b>50, 60, 75, 90, 100, 120, 150, 180</b> |
|                  | <b>250, 300, 360</b>                      |
| <b>2IK6UC</b> -□ | <b>5, 6, 7.5, 9, 12.5, 15, 18</b>         |
|                  | <b>25, 30, 36</b>                         |
|                  | <b>50, 60, 75, 90, 100, 120, 150, 180</b> |
|                  | <b>250, 300, 360</b>                      |

The following items are included in each product.

Motor, Gearhead, Capacitor, Capacitor Cap, Installation Screws, Parallel Key, Operating Manual

#### Round Shaft Type

| Product Name    |
|-----------------|
| <b>2IK6A-UA</b> |
| <b>2IK6A-GC</b> |
| <b>2IK6A-UC</b> |

The following items are included in each product.

Motor, Capacitor, Capacitor Cap, Operating Manual

● A number indicating the gear ratio is entered where the box □ is located within the product name.

## Permissible Torque on Combination Types

- The speed is calculated by dividing the motor's synchronous speed (50 Hz: 1500 r/min, 60 Hz: 1800 r/min) by the gear ratio.  
The actual speed is 2 to 20% less, depending on the load.

### 50 Hz

Unit : N·m

| Product Name     | Speed r/min | 300  | 250  | 200  | 166  | 120  | 100  | 83   | 60  | 50  | 41  | 30  | 25  | 20  | 16.6 | 15  | 12.5 | 10  | 8.3 | 6   | 5   | 4.1 |   |
|------------------|-------------|------|------|------|------|------|------|------|-----|-----|-----|-----|-----|-----|------|-----|------|-----|-----|-----|-----|-----|---|
|                  | Gear Ratio  | 5    | 6    | 7.5  | 9    | 12.5 | 15   | 18   | 25  | 30  | 36  | 50  | 60  | 75  | 90   | 100 | 120  | 150 | 180 | 250 | 300 | 360 |   |
| <b>2IK6GC-</b> □ |             | 0.22 | 0.26 | 0.33 | 0.40 | 0.55 | 0.66 | 0.79 | 1.1 | 1.3 | 1.5 | 2.1 | 2.5 | 3.2 | 3.8  | 4.2 | 5.1  | 6   | 6   | 6   | 6   | 6   | 6 |

### 60 Hz

Unit : N·m

| Product Name     | Speed r/min | 360  | 300  | 240  | 200  | 144  | 120  | 100  | 72   | 60  | 50  | 36  | 30  | 24  | 20  | 18  | 15  | 12  | 10  | 7.2 | 6   | 5   |
|------------------|-------------|------|------|------|------|------|------|------|------|-----|-----|-----|-----|-----|-----|-----|-----|-----|-----|-----|-----|-----|
|                  | Gear Ratio  | 5    | 6    | 7.5  | 9    | 12.5 | 15   | 18   | 25   | 30  | 36  | 50  | 60  | 75  | 90  | 100 | 120 | 150 | 180 | 250 | 300 | 360 |
| <b>2IK6U</b> ■-□ |             | 0.18 | 0.22 | 0.28 | 0.33 | 0.46 | 0.55 | 0.66 | 0.92 | 1.1 | 1.3 | 1.8 | 2.1 | 2.6 | 3.2 | 3.5 | 4.2 | 5.0 | 6   | 6   | 6   | 6   |

## Permissible Radial Load/Permissible Axial Load

→ page 32

## Permissible Inertia J of Combination Types

→ page 32

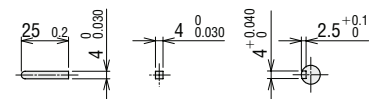
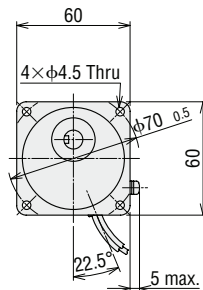
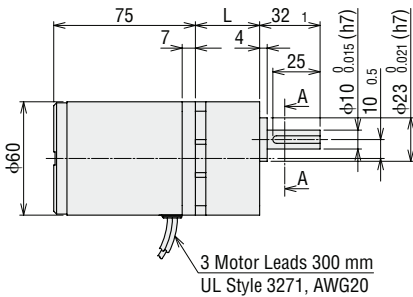
## Dimensions (Unit = mm)

- "Installation screws" are included with the combination type. Dimensions of installation screws → page 31

### Lead Wire Type

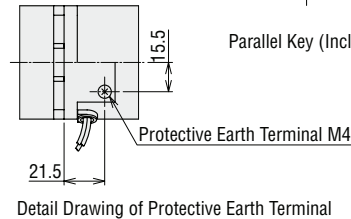
#### ◇ Combination Type

| Product Name                         | Motor Product Name     | Gearhead Product Name | Gear Ratio | L  | Mass kg |
|--------------------------------------|------------------------|-----------------------|------------|----|---------|
| <b>2IK6U</b> ■-□<br><b>2IK6GC</b> -□ | 2IK6GV-U■<br>2IK6GV-GC | 2GV□B                 | 5~25       | 34 | 1.2     |
|                                      |                        |                       | 30~120     | 38 |         |
|                                      |                        |                       | 150~360    | 43 |         |



Parallel Key (Included)

Cross Section A-A

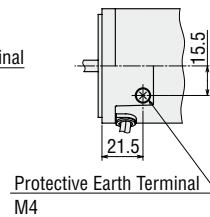
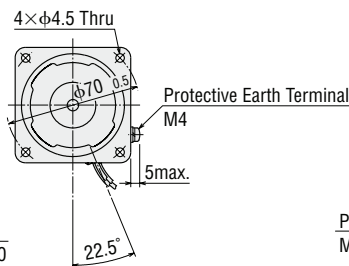
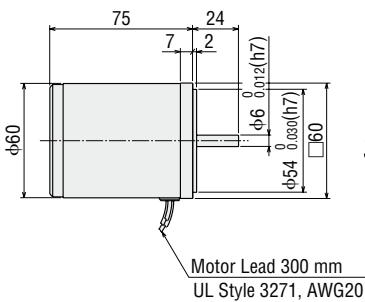


Detail Drawing of Protective Earth Terminal

#### ◇ Round Shaft Type

### 2IK6A-U■, 2IK6A-GC

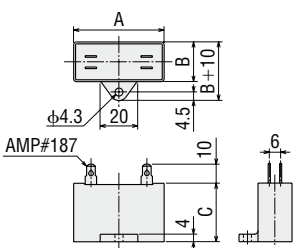
Mass: 0.7 kg



Detail Drawing of Protective Earth Terminal

#### ◇ Capacitor (Included)

Unit : mm



| Product Name     |                  | Capacitor Product Name | A  | B    | C    | Mass g |
|------------------|------------------|------------------------|----|------|------|--------|
| Combination Type | Round Shaft Type |                        |    |      |      |        |
| <b>2IK6UA</b> -□ | <b>2IK6A-UA</b>  | CH25FAUL2              | 31 | 17   | 27   | 21     |
| <b>2IK6GC</b> -□ | <b>2IK6A-GC</b>  | CH06BFAUL              | 31 | 14.5 | 23.5 | 18     |
| <b>2IK6UC</b> -□ | <b>2IK6A-UC</b>  | CH06BFAUL              | 31 | 14.5 | 23.5 | 18     |

- Capacitor Cap is included.

- Either **A** or **C** indicating the power supply voltage is replaced with the box ■ in the product name.  
A number indicating the gear ratio is entered where the box □ is located within the product name.