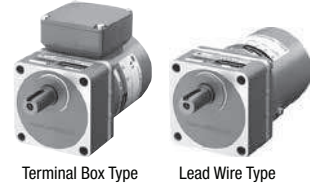


Induction Motors

60 W

□ 90 mm

Combination Type, Round Shaft Type



Terminal Box Type

Lead Wire Type

Specifications - Continuous Rating



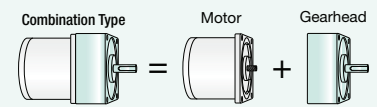
Product Name Upper Level: Combination Type Lower Level: Round Shaft Type		Output Power	Voltage	Frequency	Current	Starting Torque	Rated Torque	Rated Speed
Terminal Box Type	Lead Wire Type	W	VAC	Hz	A	mN-m	mN-m	r/min
5IK60VEST2-□ 5IK60VA-EST2	5IK60VES-□ 5IK60VA-ES	60	Three-Phase 220	50	0.37	600	410	1400
				60	0.33	500	350	1670
		60	Three-Phase 230	50	0.38	600	410	1400
				60	0.33	500	350	1670

- The specifications apply to the motor only.
- There is no built-in overheat protection device (thermal protector).
To prevent the motor from burning out when an excess load is applied or the output shaft is locked, use the electrical thermal function of the electromagnetic switch or the inverter.
- To combine this model with an inverter, set the frequency of the inverter to 120 Hz or lower.

Product Line

Combination Type

The combination type comes with a motor and a gearhead pre-assembled.
The combination of the motor and the gearhead can be changed.
They are also available separately.
You can also remove the gearhead to change the installation position by 90°.



Combination Type

Type	Product Name	Gear Ratio
Terminal Box Type	5IK60VEST2-□	5, 6, 7.5, 9, 12.5, 15, 18
		25, 30, 36, 50, 60, 75, 90, 100
		120, 150, 180
		250, 300
Lead Wire Type	5IK60VES-□	5, 6, 7.5, 9, 12.5, 15, 18
		25, 30, 36, 50, 60, 75, 90, 100
		120, 150, 180
		250, 300

The following items are included in each product.
Motor, Gearhead, Installation Screws, Parallel Key, Operating Manual

Round Shaft Type

Type	Product Name
Terminal Box Type	5IK60VA-EST2
Lead Wire Type	5IK60VA-ES

The following items are included in each product.
Motor, Operating Manual

Permissible Torque on Combination Types

50 Hz

Unit : N·m

Product Name	Speed r/min	300	250	200	166	120	100	83	60	50	41	30	25	20	16.6	15	12.5	10	8.3	6	5	
	Gear Ratio	5	6	7.5	9	12.5	15	18	25	30	36	50	60	75	90	100	120	150	180	250	300	
5IK60VEST2-□, 5IK60VES-□		1.8	2.2	2.8	3.3	4.6	5.5	6.6	8.8	10.6	12.7	17.6	21.2	26.4	30	30	30	30	30	30	30	30

60 Hz

Unit : N·m

Product Name	Speed r/min	360	300	240	200	144	120	100	72	60	50	36	30	24	20	18	15	12	10	7.2	6	
	Gear Ratio	5	6	7.5	9	12.5	15	18	25	30	36	50	60	75	90	100	120	150	180	250	300	
5IK60VEST2-□, 5IK60VES-□		1.6	1.9	2.4	2.8	3.9	4.7	5.7	7.5	9.0	10.8	15.1	18.1	22.6	27.1	30	30	30	30	30	30	30

- The speed is calculated by dividing the motor's synchronous speed (50 Hz: 1500 r/min, 60 Hz: 1800 r/min) by the gear ratio.
The actual speed is 2 to 10% less, depending on the load.

- A number indicating the gear ratio is entered where the box □ is located within the product name.

Permissible Radial Load/Permissible Axial Load

→ page 56

Permissible Inertia J of Combination Types

→ page 55

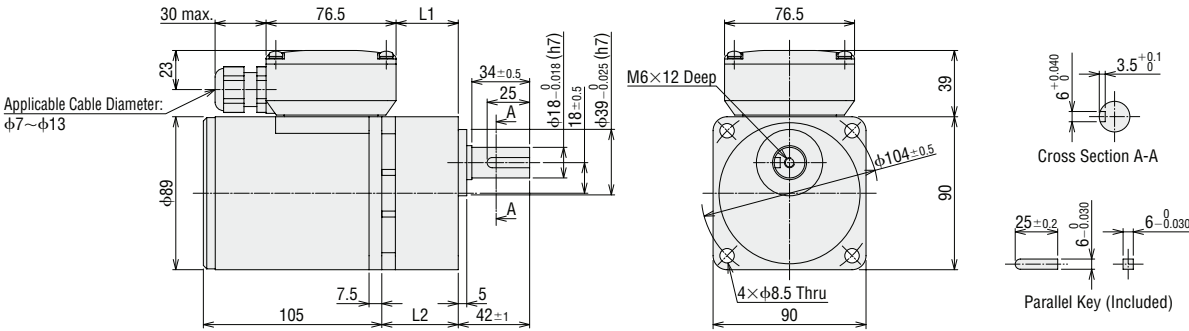
Dimensions (Unit = mm)

- "Installation screws" are included with the combination type. Dimensions of installation screws → page 55
- The cable outlet of the terminal box can be changed and fixed to four different directions.
- A number indicating the gear ratio is entered where the box □ is located within the product name.

Combination Type

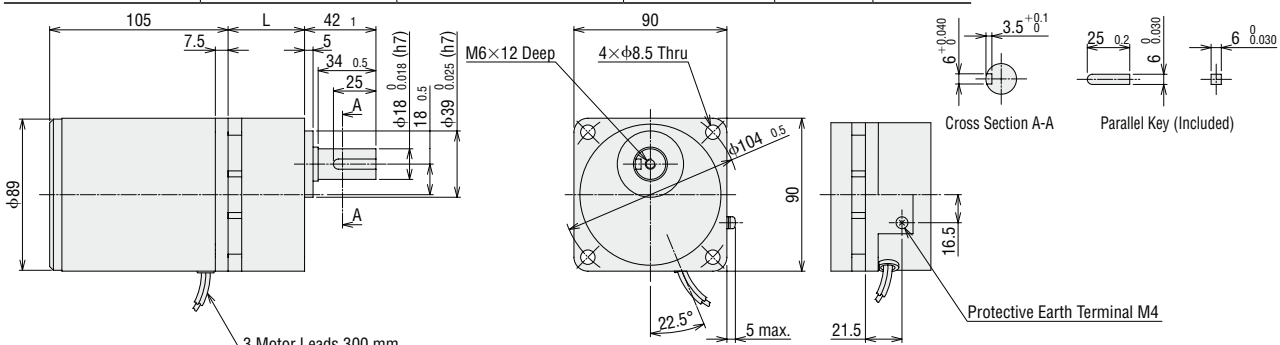
Terminal Box Type

Product Name	Motor Product Name	Gearhead Product Name	Gear Ratio	L1	L2	Mass kg
5IK60VEST2-□	5IK60VGVH-EST2	5GVH□B	5~18	36.6	45	4.1
			25~100	49.6	58	
			120~300	55.6	64	



Lead Wire Type

Product Name	Motor Product Name	Gearhead Product Name	Gear Ratio	L	Mass kg
5IK60VES-□	5IK60VGVH-ES	5GVH□B	5~18	45	3.8
			25~100	58	
			120~300	64	

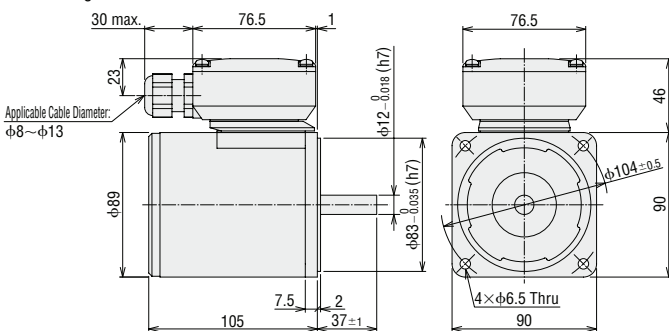


Round Shaft Type

Terminal Box Type

5IK60VA-EST2

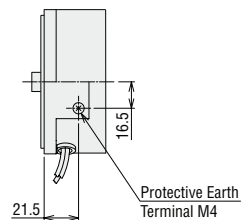
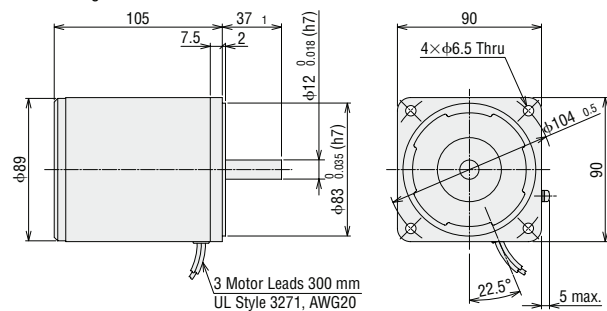
Mass: 2.6 kg



Lead Wire Type

5IK60VA-ES

Mass: 2.3 kg



Detail Drawing of Protective Earth Terminal

KIIS Series

6 W
110~230 VAC

15 W
110~230 VAC

Induction
25 W
110~230 VAC

40 W
110~230 VAC

60 W
110~230 VAC

90 W
110~230 VAC

KIIS Series

60 W
220, 230 VAC

Induction
100 W
220, 230 VAC

100 W
220, 230 VAC
Hollow/Solid Shaft

200 W
220~400 VAC

KIIS Series

With Electromagnetic Brake

60 W
220, 230 VAC

100 W
220, 230 VAC